



PORTLAND DRIVE

BARRY

PORTLAND DRIVE

BARRY, CF62 5AU

CHAIN FREE

£315,000 -

FREEHOLD



4 Bed



2 Bath



1498.00 sq ft

Stylish Four Bedroom Townhouse on Portland Drive, Barry

Situated on the sought after Portland Drive in Barry, this delightful four bedroom townhouse offers the ideal balance of modern comfort and everyday convenience. Thoughtfully laid out, the home features a spacious reception room, perfect for both relaxing evenings and entertaining guests.

Each of the four generously sized bedrooms offers plenty of space, making it ideal for growing families or those needing room for guests or a home office. The property also benefits from two contemporary bathrooms, streamlining busy mornings.

Practicality is a key highlight, with an integral garage for secure parking or storage, as well as additional off road parking for residents and visitors alike.

Location is everything, and this home delivers. Just a short walk from local supermarkets and close to the waterfront, where scenic coastal walks await.

More than just a home, this property offers a lifestyle. Enjoy the vibrant community of Barry with all the comfort and space you need for modern living. Whether you're upsizing or simply seeking a fresh start, this townhouse is ready to exceed your expectations.

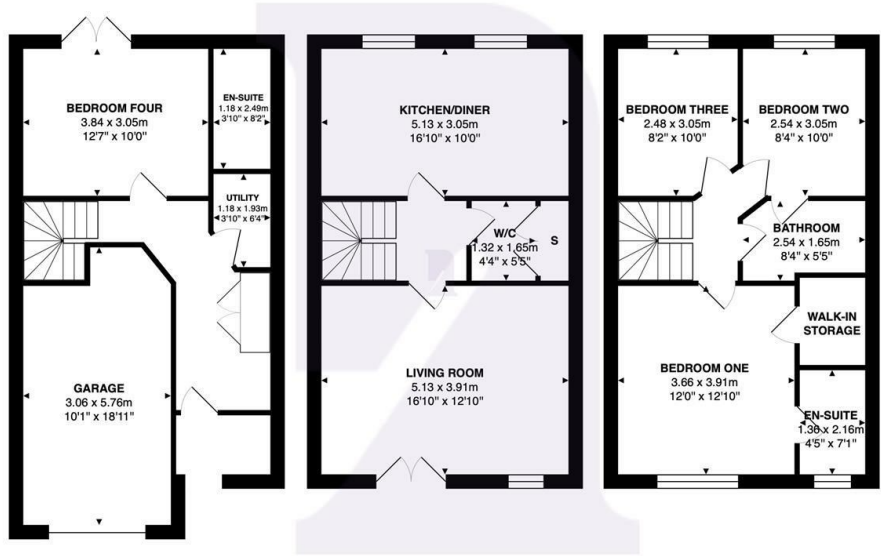




Energy Efficiency Rating		
	Current	Potential
Very energy efficient - lower running costs		
(92 plus) A		
(81-91) B		
(69-80) C		
(55-68) D		
(39-54) E		
(21-38) F		
(1-20) G		
Not energy efficient - higher running costs		
England & Wales		EU Directive 2002/91/EC



Portland Drive Barry, CF62 5AU



Total Area: 139.2 m² ... 1498 ft²
All measurements are approximate and for display purposes only

BARRY & THE VALE'S HOME FOR

STYLISH SALES
& LETTINGS



KNIGHTS